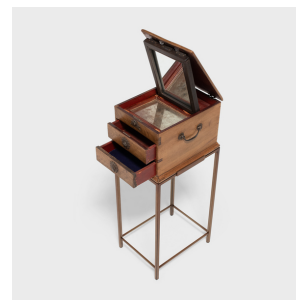
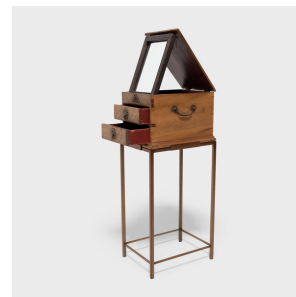

PAGODA RED



JEWELRY BOX SIDE TABLE

\$1,480

c. 1900 • Jiangsu, China • Brass, Steel, Birch • Collection #BJD135

W: 9.0" D: 11.5" H: 26.25"

Long ago, this little box was used by a Qing-dynasty woman to store her favorite pieces of jewelry, each drawer filled with jades, pearls, coral necklaces, and hair pins. The front is topped by a keyhole escutcheon in the form of a lotus, a symbol of purity and beauty, while below it, two starburst pulls ornament each drawer. Aged with a rich patina, the brass hardware contrasts with the chest's birch wood construction, left unfinished to showcase its golden color and beautiful grain pattern. The chest's lid lifts to reveal a framed mirror and two shallow jewelry compartments. We've re-imagined this charming jewelry box as a petite side table, elevated by a custom steel table base. Continued...



1740 W. Webster Ave., Chicago, IL 60614 • 773-235-1188 • info@pagodared.com

PAGODARED.COM

PAGODA RED

JEWELRY BOX SIDE TABLE

Additional Dimensions:

Top Tray: 7.25"W x 9.75"D x 1.5"H

Drawers: 6.5"W x 9.25"D x 1.



1740 W. Webster Ave., Chicago, IL 60614 • 773-235-1188 • info@pagodared.com

PAGODARED.COM