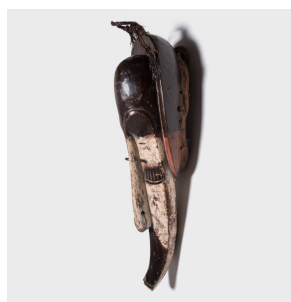

PAGODA RED



NIGERIAN IGBO MASK

\$1,680

c. 1950 • Nigeria • Pigment, Wood, Metal, Natural Material • Collection #CAA1332

W: 10.0" D: 9.0" H: 31.5"

The Igbo tribe uses thousands of masks to incarnate unspecified souls of the dead, forming a vast community of ancestral spirits. The chalk white painted face is a common Igbo representation of the benevolence of spirits, though the elongated sculptural form of this example is striking. Form, coloration, and symbolism combine into a fantastic sculptural piece.



1740 W. Webster Ave., Chicago, IL 60614 • 773-235-1188 • info@pagodared.com

PAGODARED.COM