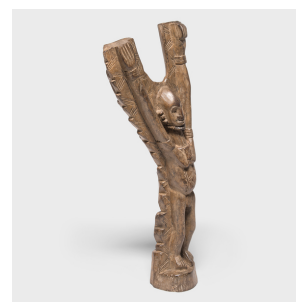
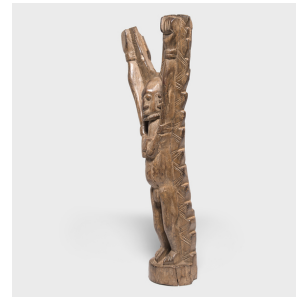

PAGODA RED



DOGON TOGUNA POST

\$880

c. 1950 • Mali • Wood • Collection #CAA0573

W: 12.5" D: 6.0" H: 31.0"

This intricately carved sculptural object by the Dogon people of Mali combines motifs from traditional Dogon ladders and toguna posts, monumental forked structures used to support the thatched roof of a toguna building. A recreation of the original shelter where eight primordial ancestors once gathered, a toguna is an important gathering space in the center of a Dogon village. Each toguna post is carved with an abstract figure, intended to symbolize fertility or express a particular spirit. Continued...



1740 W. Webster Ave., Chicago, IL 60614 • 773-235-1188 • info@pagodared.com

PAGODARED.COM

PAGODA RED

DOGON TOGUNA POST

Bearing a figure with arms outstretched, this small post is also carved with the stepped notches characteristic of tall Dogon ladders. A seamless blend of motifs, we love the graceful bend and gestural form of this sculptural hand-carved object.



1740 W. Webster Ave., Chicago, IL 60614 • 773-235-1188 • info@pagodared.com

PAGODARED.COM