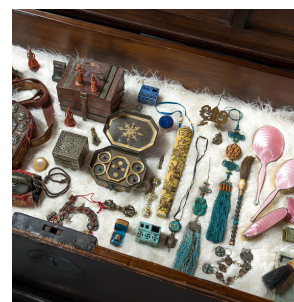


---

# PAGODA RED

---



## TEAL GLAZED BRUSH REST

**\$288**

c. 1900 • China • Stoneware • Collection #CFC607

W: 2.5" D: 2.0" H: 1.75"

Set alongside the four treasures of the study - the calligraphy brush, ink, paper, and inkstone - a brush rest was an essential fixture of the scholars' desk. This early 20th century ceramic brush rest is bathed in a speckled turquoise glaze reminiscent of a robin's egg. Used to hold ink sticks and calligraphy brushes, the hollow, rectangular form has three main openings on the top and openwork embellishments of round coins and decorative geometric cutouts. The front of the brush holder is stamped with the Chinese character for longevity (壽 shòu), beckoning a long life of abundance. Continued...



1740 W. Webster Ave., Chicago, IL 60614 • 773-235-1188 • [info@pagodared.com](mailto:info@pagodared.com)

PAGODARED.COM

---

# PAGODA RED

---

## TEAL GLAZED BRUSH REST

From the collection of Frances and Gary Comer.



1740 W. Webster Ave., Chicago, IL 60614 • 773-235-1188 • [info@pagodared.com](mailto:info@pagodared.com)

PAGODARED.COM