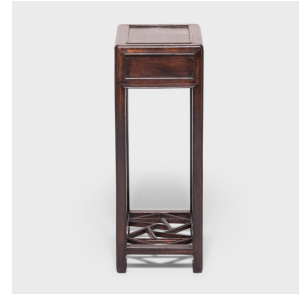

PAGODA RED



CRACKED ICE LATTICE TABLE

\$1,980

c. 1900 • Zhejiang, China • Brass, Beech • Collection #BJB112

W: 11.0" D: 15.5" H: 29.0"

This simple 19th-century display table from China's Zhejiang province features a petite drawer and a sophisticated cracked ice pattern lattice shelf. Cracked ice lattice, or "binglei," was a popular 17th-century Chinese decorative motif admired for its asymmetry. The lattice is brilliantly joined together piece by piece, executed with puzzle-like precision. The petite table was left otherwise unadorned, highlighting the beautiful grain and color of its beechwood construction.



1740 W. Webster Ave., Chicago, IL 60614 • 773-235-1188 • info@pagodared.com

PAGODARED.COM

PAGODA RED

CRACKED ICE LATTICE TABLE

Additional Dimensions:

Drawer: 7"W x 10.25"D x 2"H

Apron to Lattice: 20.5"



1740 W. Webster Ave., Chicago, IL 60614 • 773-235-1188 • info@pagodared.com

PAGODARED.COM