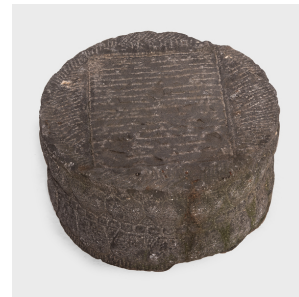

PAGODA RED



STONE LOTUS COLUMN BASE

\$4,780

c. 1750 • Shanxi, China • Limestone • Collection #BJA025

H: 12.75" Dia: 25.5"

This 18th century stone column base is a rare tribute to a style of architecture that dominated China for generations and continues to influence modern architects. It was carved over two centuries ago in China's Shanxi region out of a solid block of limestone. The carved square inset on its top surface was created to seamlessly meet a wooden column. The round form with square detail makes a strong statement indoors or out, as a table, a table base or a display mount.



1740 W. Webster Ave., Chicago, IL 60614 • 773-235-1188 • info@pagodared.com

PAGODARED.COM