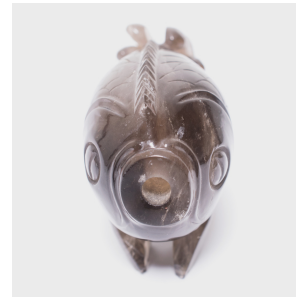

PAGODA RED



SMOKY QUARTZ GOLDFISH SNUFF BOTTLE

\$488

c. 1850 • Northern China, China • Crystal • Collection #CMKH129

W: 1.5" D: 3.0" H: 2.0"

Western diplomats introduced snuff, a mixture of powdered tobacco, herbs, and spices, to China in the 17th century. Members of the imperial court favored glass bottles over Western-style snuff boxes, commissioning exquisitely crafted bottles that were as much status symbols as storage containers. Sensitive to the crystalline nature of smoky quartz, this fish-shaped bottle cleverly tips on its side, creating a mouth out of the round opening.



1740 W. Webster Ave., Chicago, IL 60614 • 773-235-1188 • info@pagodared.com

PAGODARED.COM