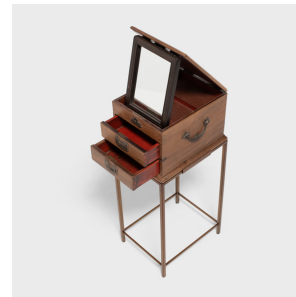
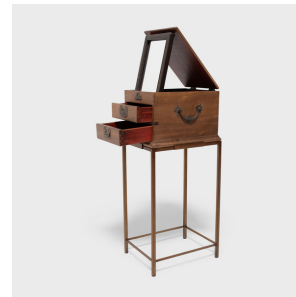

PAGODA RED



JEWELRY BOX SIDE TABLE

\$1,480

c. 1900 • Jiangsu, China • Brass, Steel, Birch • Collection #BJD136

W: 9.25" D: 11.75" H: 26.0"

Long ago, this little box was used by a Qing-dynasty woman to store her favorite pieces of jewelry, each drawer filled with jades, pearls, coral necklaces, and hair pins. Crafted of birch wood, the jewelry chest has two shallow drawers and opens to a large mirror and tiered interior compartment. The front is ornamented with a lotus-form brass key hole escutcheon and two brass drawer pulls in the form of ancient locks, symbols of protection and longevity. We've re-imagined this charming jewelry box as a petite side table, elevated by a custom steel table base.



1740 W. Webster Ave., Chicago, IL 60614 • 773-235-1188 • info@pagodared.com

PAGODARED.COM

PAGODA RED

JEWELRY BOX SIDE TABLE

Additional Dimensions:

Top interior tray: 7.75"W x 5.5"D x 0.5"H

Top drawer front compartment: 6.75"W x 6.75"D x 1.75"H

Top drawer back compartment: 6.75"W x 2.25"D x 1.75"H

Bottom drawer: 6.75"W x 9.5"D x 1.75"H



1740 W. Webster Ave., Chicago, IL 60614 • 773-235-1188 • info@pagodared.com

PAGODARED.COM