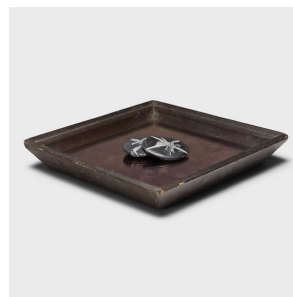

PAGODA RED



PETITE ROSE MIRROR TRAY

\$288

c. 1900 • Shanxi, China • Pine, Lacquer, Mirror • Collection #TLB111V

W: 11.25" D: 11.25" H: 1.75"

Simple lines, a modest form, and a layer of hand-brushed lacquer give this petite Qing-dynasty tray a provincial charm that recalls the warmth of home. The dark brown lacquer finish has weathered with time to reveal the light brown coloring of its pine wood construction. For added dimension, we've attached rose mirror glass at the base of the tray as a modern twist.

A tray like this would have been used to serve tea or food to friends and family gathered on traditional kang daybeds. Continued...



1740 W. Webster Ave., Chicago, IL 60614 • 773-235-1188 • info@pagodared.com

PAGODARED.COM

PAGODA RED

PETITE ROSE MIRROR TRAY

Today, we love using small trays like this as serving platters or catch-all dishes for jewelry, glasses, and other accessories.



1740 W. Webster Ave., Chicago, IL 60614 • 773-235-1188 • info@pagodared.com

PAGODARED.COM