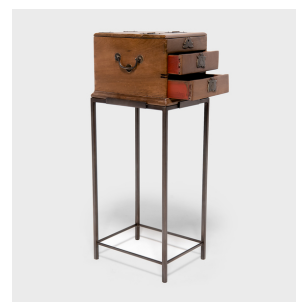

PAGODA RED



JEWELRY BOX SIDE TABLE

\$1,880

c. 1900 • Jiangsu, China • Cedar, Steel • Collection #BJD134

W: 9.0" D: 11.25" H: 28.0"

Long ago, this little box adorned with fruit-shaped hardware was used by a Qing-dynasty lady to store her favorite pieces of jewelry, each drawer filled with jades, pearls, coral necklaces, and hair pins. Crafted of cedar wood, the box has two shallow drawers and opens to reveal a rectangular mirror and hidden compartment. The brass lock and drawer pulls are shaped as peaches and pomegranates, symbols of longevity, fertility, and good luck. We've re-imagined this charming jewelry box as a petite side table, elevated by a custom steel table base.



1740 W. Webster Ave., Chicago, IL 60614 • 773-235-1188 • info@pagodared.com

PAGODARED.COM

PAGODA RED

JEWELRY BOX SIDE TABLE

Additional Dimensions:

Drawers: 6.5"W x 9.25"D x 1.75"H



1740 W. Webster Ave., Chicago, IL 60614 • 773-235-1188 • info@pagodared.com

PAGODARED.COM