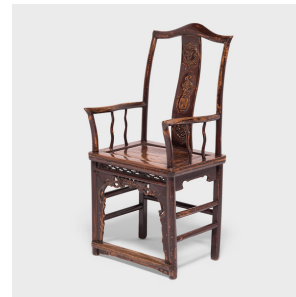
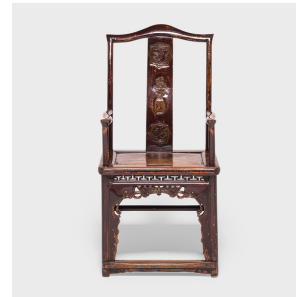

PAGODA RED



PAIR OF SOUTHERN ADMINISTRATOR'S CHAIRS

\$6,380

c. 1850 • Northern China, China • Northern Elmwood, Lacquer • Collection #CANB004

W: 21.75" D: 18.0" H: 44.5"

This pair of 19th-century elmwood administrator's chairs are from northern China and feature arching back splats hand-carved with traditional motifs including peonies, sparrows, and trailing vine patterns. Each chair's front apron is carved with intricate key patterns and bats with outstretched wings, symbolizing happiness and good fortune. Unusually sinuous spindles support the armrests and the chairs' tall backs follow the natural curves of the body. The original lacquer finish has aged gracefully over time, smoothly worn and deeply patinated from a century of use.



1740 W. Webster Ave., Chicago, IL 60614 • 773-235-1188 • info@pagodared.com

PAGODARED.COM

**PAGODA
RED**

PAIR OF SOUTHERN ADMINISTRATOR'S CHAIRS

Additional Dimensions:

Seat Height: 20.5"



1740 W. Webster Ave., Chicago, IL 60614 • 773-235-1188 • info@pagodared.com

PAGODARED.COM