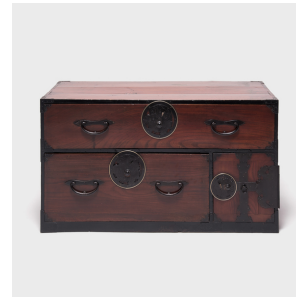

PAGODA RED



PAIR OF JAPANESE TANSU

\$3,980

c. 1850 • Japan • Cedar, Iron • Collection #CLB001

W: 43.0" D: 19.0" H: 22.75"

Traditionally designed to be portable and functional, Japanese tansu chests were versatile storage cabinets. This pair was originally used to store kimonos. Made during Japan's Meiji period (1868-1912), considered the Golden Age of tansu making, the chests are in rich color, have intricate hardware, and are an ideal combination of utility and beauty. The drawer fronts are zelkova wood (keyaki) and the body is cryptomeria cedar (sugi). Four main drawers combine with a smaller hinged compartment to provide versatile storage space. These tansu are fantastic whether stacked, separated, or paired.



1740 W. Webster Ave., Chicago, IL 60614 • 773-235-1188 • info@pagodared.com

PAGODARED.COM