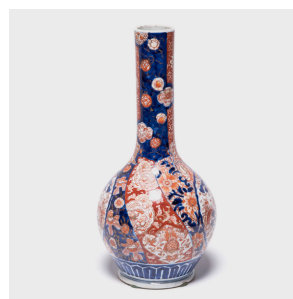
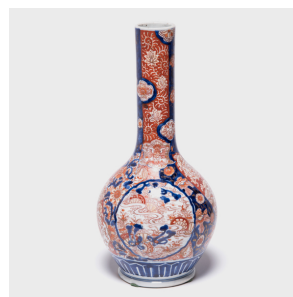
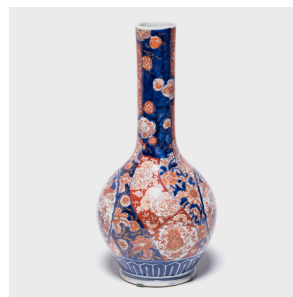

PAGODA RED



IMARI BOTTLENECK VASE

\$1,980

c. 1900 • Japan • Paint, Porcelain • Collection #CLS007

H: 16.0" Dia: 7.75"

The Meiji period (1868–1912) in Japan saw a revival of many traditional art forms, including the Imari porcelain style demonstrated by this exquisite pair of bottle-neck vases. Named after the Japanese port from which these ceramics were shipped to the West beginning in the late 17th century, this elegant pattern initially emulated the color and intricate designs of traditional textiles. Borders and backgrounds were typically created with a blue underglaze, followed by lavish designs in colored paint or glazes. Continued...



1740 W. Webster Ave., Chicago, IL 60614 • 773-235-1188 • info@pagodared.com

PAGODARED.COM

PAGODA RED

IMARI BOTTLENECK VASE

The reddish orange, combined with the rich blue, that so beautifully and delicately describes the exotic garden scenes and floral designs on these vases was especially prized and led to countless imitations by some of Europe's most revered porcelain manufacturers.



1740 W. Webster Ave., Chicago, IL 60614 • 773-235-1188 • info@pagodared.com

PAGODARED.COM