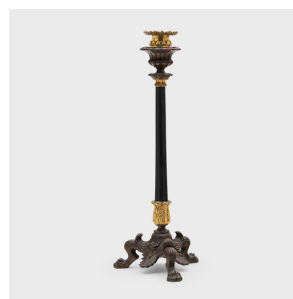
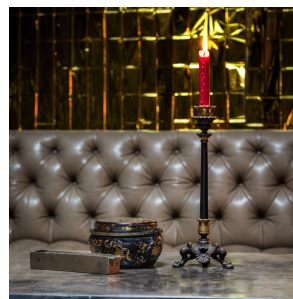

PAGODA RED



PAIR OF FRENCH GILT BRONZE AND SLATE CANDLESTICKS

\$1,880

c. 1850 • France • Bronze, Slate • Collection #CFC630

W: 4.5" D: 4.5" H: 13.0"

This regal pair of bronze and slate candlesticks originated in 19th-century France and are beautifully detailed with molded and gilt embellishments. Crafted in the style of Empire furniture, each candlestick rests on a triform bronze base of claw feet and petal scrollwork, topped by a gilt acanthus leaf throne supporting a simple black slate stem. The sleek stone posts in turn support an urn-form bronze capital with floral and gilt elements. A gorgeous example of French opulence, this pair of gilt candlesticks adds a touch of refinement to any setting. Continued...



1740 W. Webster Ave., Chicago, IL 60614 • 773-235-1188 • info@pagodared.com

PAGODARED.COM

**PAGODA
RED**

PAIR OF FRENCH GILT BRONZE AND SLATE CANDLESTICKS

From the collection of Frances and Gary Comer.



1740 W. Webster Ave., Chicago, IL 60614 • 773-235-1188 • info@pagodared.com

PAGODARED.COM