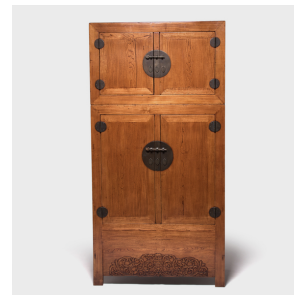


---

# PAGODA RED

---



## PAIR OF DOUBLE DRAGON COMPOUND CABINETS

**\$18,800**

1830 • China • Northern Elmwood, Brass • Collection #CCB001

W: 49.5" D: 21.75" H: 98.0"

Likely to have been the centerpiece of a wealthy gentleman's home, this pair of Qing-dynasty compound cabinets are actually comprised of two stacked storage compartments. The upper compartment was traditionally used for hats or out of-season clothes while the lower compartment stored everyday garments.

Constructed over a century ago, the cabinets are wonderfully preserved, exhibiting rich, lustrous wood and handcrafted brass hardware. At the base of the lower cabinet is a concealed opening that would have held blankets and other bedding. The center rail was designed to be removable for easier access. Continued...



1740 W. Webster Ave., Chicago, IL 60614 • 773-235-1188 • [info@pagodared.com](mailto:info@pagodared.com)

**PAGODARED.COM**

---

# PAGODA RED

---

## PAIR OF DOUBLE DRAGON COMPOUND CABINETS

The cabinet aprons are carved with fu characters flanked by a pair of dragons' heads, denoting power and prosperity.

Additional Dimensions:

Top Shelf: 45.5"W x 17"D x 25"H

Middle Shelf: 48"W x 16.5"D x 13.5"H

Bottom Shelf: 48"W x 17"D x 16.25"H

Drawers: 10.5"W x 12.25"D x 2"H

Secret Compartment: 48"W x 16.5"D x 15.

