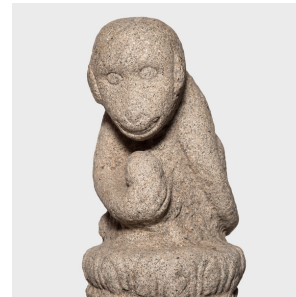


---

# PAGODA RED

---



## JOURNEY TO THE WEST HITCHING POST

**\$21,480**

c. 1750 • Northern China, China • Stone • Collection #Q007

H: 66.0" Dia: 14.0"

This 18th century hand-carved granite post from northern China originally stood outside of an ancient building as a secure place to hitch livestock. The tall post has been carved with eight sides, an auspicious number thought to bring prosperity and good fortune. The hitching post's unadorned linear form is topped by a figural carving of a friendly-eyed monkey resting on a lotus throne and clutching a peach. A reference to the Ming-dynasty novel "Journey to the West," the monkey depicts Sun Wukong, the Monkey King who eats from the heavenly peach garden to obtain immortality. Continued...



1740 W. Webster Ave., Chicago, IL 60614 • 773-235-1188 • [info@pagodared.com](mailto:info@pagodared.com)

**PAGODARED.COM**

## JOURNEY TO THE WEST HITCHING POST

The lotus throne symbolizes the harmonious unfolding of spirituality. Mounted on a custom steel stand, the hitching post stands proud indoors or out.

