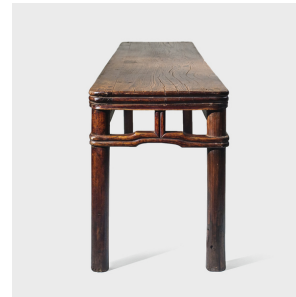

PAGODA RED



ELEGANT BENCH

\$2,680

Qing dynasty, China • Shanxi, China • Northern Elmwood • Collection #PD37471643

W: 74.0" D: 14.5" H: 16.0"

With its refined trim and open fretwork, this centuries-old, elegantly proportioned bench feels surprisingly contemporary. Made in China's Shanxi province, it was originally used as a family altar. Buddha figures, candles and offerings such as fruit, would have been placed on it to please ancestral spirits.

Carved from a single piece of elm wood foraged from the forests of Northern China, the table has aged beautifully over time. Representing the most elegant Ming fashion, this piece has a pure and simple form created by master carpenters.

Continued...



1740 W. Webster Ave., Chicago, IL 60614 • 773-235-1188 • info@pagodared.com

PAGODARED.COM

PAGODA RED

ELEGANT BENCH

Sensitive to the subtlest of details, the woodworkers encircled the outer edge of the table's round legs with stretchers, giving the design a natural flow and referencing bamboo, a material thought to be humble and mimicked out of reverence for the elite's respect for humility.

Today, we envision its clean lines for bench-style dining, in an entryway or bedroom beneath a window, or even as a low media console.

