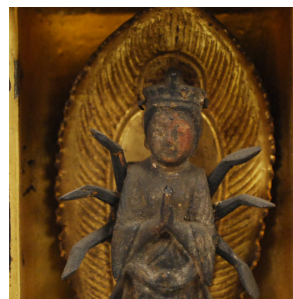

PAGODA RED



JAPANESE TRAVELING SHRINE

\$980

c. 1800 • Japan • Wood, Bronze • Collection #CMK017

W: 2.5" D: 1.75" H: 5.25"

The relatively simple exterior of this shrine belies the splendor within. The doors open to a gilded interior and the figure of a resplendent bodhisattva. Made in the 19th century, this Japanese shrine was likely acquired by a Buddhist follower on a religious pilgrimage. Devotees would often take a shrine such as this home as a memento or donate it to a temple as an expression of religious devotion.



1740 W. Webster Ave., Chicago, IL 60614 • 773-235-1188 • info@pagodared.com

PAGODARED.COM

PAGODA RED

JAPANESE TRAVELING SHRINE

Additional Dimensions

Width when open: 4.5"



1740 W. Webster Ave., Chicago, IL 60614 • 773-235-1188 • info@pagodared.com

PAGODARED.COM