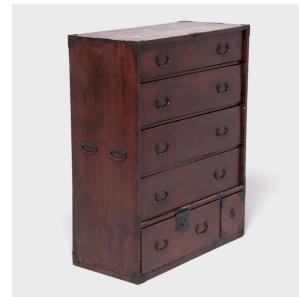


---

# PAGODA RED

---



## JAPANESE TANSU CHEST

**\$2,480**

c. 1900 • Japan • Wood • Collection #CLB002

W: 33.75" D: 15.25" H: 40.75"

Traditionally designed to be portable and functional, Japanese tansu chests were versatile storage cabinets used for all kinds of purposes. This chest of drawers was originally used to store kimono. Made during Japan's Meiji period (1868-1912), considered the Golden Age of tansu making, the chest is a beautiful combination of utility and beauty. The drawer fronts are zelkova wood (keyaki) and the body is cryptomeria cedar (sugi). Featuring four drawers stacked on a row of smaller drawers, the wooden chest is punctuated with handmade iron pulls with handles on the sides for easy transport.



1740 W. Webster Ave., Chicago, IL 60614 • 773-235-1188 • [info@pagodared.com](mailto:info@pagodared.com)

**PAGODARED.COM**

---

# PAGODA RED

---

## JAPANESE TANSU CHEST

Additional Dimensions:

Top drawer: 31"W x 13"D x 5.25"H

Middle three drawers: 31"W x 13"D x 6.5"H

Bottom left drawer: 22.5"W x 13"D x 7"H

Bottom right drawer: 7"W x 13"D x 7"H



1740 W. Webster Ave., Chicago, IL 60614 • 773-235-1188 • [info@pagodared.com](mailto:info@pagodared.com)

PAGODARED.COM