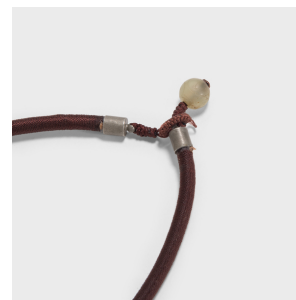
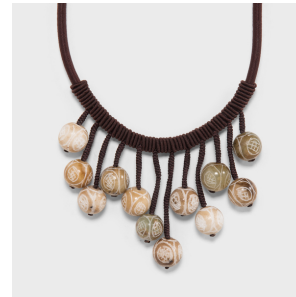

PAGODA RED



JADE BEAD FRINGE NECKLACE

\$300

Shanghai, China • Jade • Collection #CJLDN447SZ

W: 4.75" D: 0.5" H: 9.0"

Created by artisans in Shanghai, this beautiful statement necklace features a fringe of early 20th-century jade beads, possibly once worn as earrings or decorative robe fastenings. Valued for its rarity and lustrous appearance, jade has been thought to symbolize excellence and purity of human virtue. Worn as jewelry or as a protective charm, the stone was thought to imbue a person with a clear mind and pure spirit, and to guard against evil spirits or illness. Jade beads such as this were thought to express the humility of propriety, as they dangled off a piece of jewelry yet did not fall to the ground. Continued...



1740 W. Webster Ave., Chicago, IL 60614 • 773-235-1188 • info@pagodared.com

PAGODARED.COM

PAGODA RED

JADE BEAD FRINGE NECKLACE

Strung with intricately hand-knotted cord, these stunning jade beads form a striking piece of contemporary jewelry.

All jewelry sales are final. No refunds or exchanges.



1740 W. Webster Ave., Chicago, IL 60614 • 773-235-1188 • info@pagodared.com

PAGODARED.COM