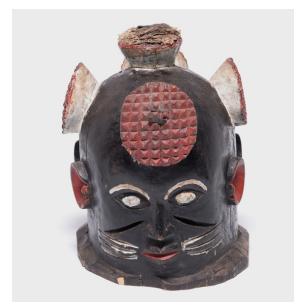

PAGODA RED



IGBO TWO-FACED HELMET MASK

\$1,880

c. 1900 • Nigeria • Paint, Wood • Collection #CAA191

W: 9.75" D: 12.75" H: 13.25"

The Igbo tribe uses thousands of masks to incarnate unspecified souls of the dead, forming a vast community of ancestral spirits. The chalk white painted face is a common Igbo representation of the benevolence of spirits. The black face is far rarer, possibly representing the former mortal life of the individual, or, possibly, their less benevolent side. In either case, form, coloration, and symbolism combine into a fantastic sculpture for considering human duality.



1740 W. Webster Ave., Chicago, IL 60614 • 773-235-1188 • info@pagodared.com

PAGODARED.COM