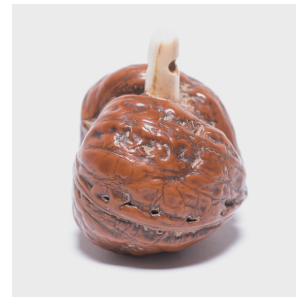
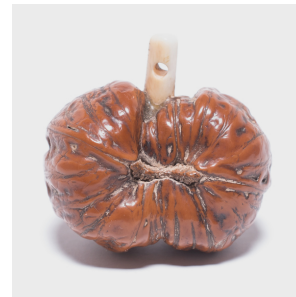

PAGODA RED



GOURD-FORM WALNUT NETSUKE CHARM

\$458

c. 1900 • Japan • Walnut, Bone • Collection #AA010

W: 1.75" D: 1.25" H: 1.5"

Japanese artisans have long held mastery in the creation of miniature treasures, or netsuke. This gourd is ingeniously carved out of a walnut shell with a polished bone spur acting as the stem at the gourd's top. A symbol of divinity, good fortune and prosperity, this gourd would have been the perfect worry stone for a person of status in Japan to take in hand when they needed a little extra luck



1740 W. Webster Ave., Chicago, IL 60614 • 773-235-1188 • info@pagodared.com

PAGODARED.COM