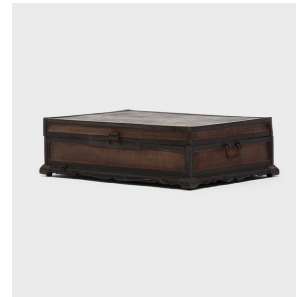

PAGODA RED



FINELY WOVEN SCROLL TRUNK

\$5,780

c. 1750 • Northern China, China • Camphor, Northern Elmwood, Bamboo, Lacquer • Collection #PHA032A

W: 25.5" D: 18.0" H: 7.5"

This 18th-century finely woven trunk was originally used to safely store painted scrolls. A skilled artisan painstakingly wove thin-as-hair reeds to cover each of the side panels, protected and reinforced by original brass corner mounts. The top maintains its original black lacquer and the inside is lined in a veneer of aromatic camphor wood, which was used similarly to the way cedar is used to line a closet, to keep contents fresh.



1740 W. Webster Ave., Chicago, IL 60614 • 773-235-1188 • info@pagodared.com

PAGODARED.COM

PAGODA RED

FINELY WOVEN SCROLL TRUNK

Additional Dimensions

Interior: 23.75"W x 16"D x 6.25"H



1740 W. Webster Ave., Chicago, IL 60614 • 773-235-1188 • info@pagodared.com

PAGODARED.COM