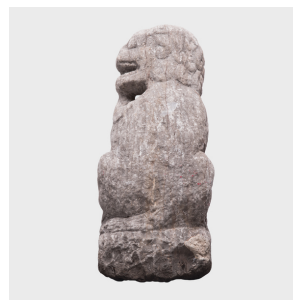
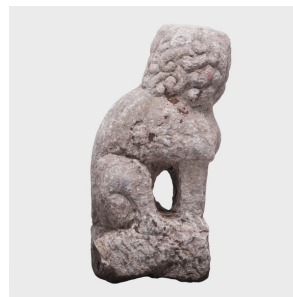
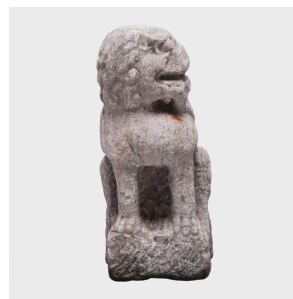

PAGODA RED



EARLY SHIZI PROTECTOR

\$5,380

c. 1700 • Northern China, China • Limestone • Collection #U171

W: 10.5" D: 11.0" H: 23.0"

This 17th/18th century Shizi was carved by hand with a peaceful peering face from a single block of limestone. Shizi, or shih-tzu, is a dog breed indigenous to China. They are one of the oldest known breeds, and were bred to resemble the mythical lion-like Fu dog. Shizi means "little lion." Shizi, both real and figural, were used to guard temples from harmful spirits.



1740 W. Webster Ave., Chicago, IL 60614 • 773-235-1188 • info@pagodared.com

PAGODARED.COM