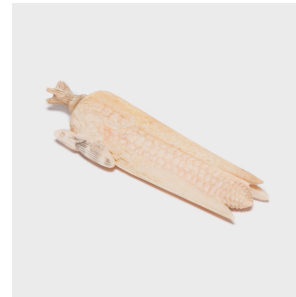


---

# PAGODA RED

---



## EAR OF CORN SNUFF BOTTLE WITH STOPPER

**\$388**

c. 1900 • China • Bone • Collection #CHBG004

W: 1.0" D: 0.5" H: 3.0"

Introduced to China in the 17th century, snuff became all the rage among ranking members of Chinese society. This heady mixture of powdered tobacco, herbs, and spices was so highly favored that consumers stored the substance in customized containers. Carved from bone, this container takes the shape of a humble ear of corn, belying its precious contents. The dexterous artist who created it captured perfectly the linear texture and nearly transparent appearance of the cob's inner leaves as well as the pearl-like shape of its kernels. The stalk end stands in as removable top.



1740 W. Webster Ave., Chicago, IL 60614 • 773-235-1188 • [info@pagodared.com](mailto:info@pagodared.com)

PAGODARED.COM