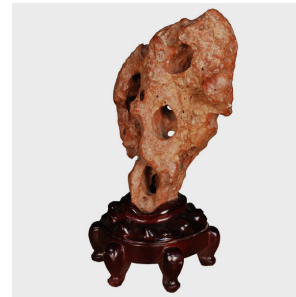


---

# PAGODA RED

---



## "DWELLERS' CLIFF" SCHOLARS' ROCK

**\$2,980**

c. 1900 • Shanxi, China • Stone, Rosewood • Collection #ZZZ101M

W: 7.0" D: 8.0" H: 14.0"

Prized for their unique formations, scholars' stones are sculptural objects of contemplation that have inspired Chinese artists for hundreds of years. They are wonderfully suggestive forms that are open to interpretation and can be simply celebrated as abstract sculpture. The finely grained and delicately textured limestone of this stone is known as Lingbi. Like every great scholar's rock, this is beautifully balanced and complemented by the warmth of its hand-carved rosewood base.



1740 W. Webster Ave., Chicago, IL 60614 • 773-235-1188 • [info@pagodared.com](mailto:info@pagodared.com)

PAGODARED.COM