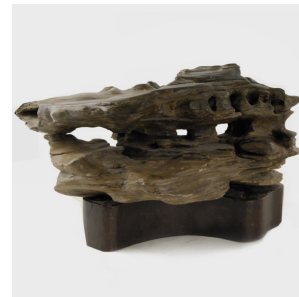


---

# PAGODA RED

---



## "CLIFF ON A MOUNTAIN" VIEWING STONE

**\$2,180**

China • Stone • Collection #P184

W: 14.0" D: 10.0" H: 6.0"

This 19th century "Cliff on a Mountain" Chinese viewing stone is known as a scholars' rock. These types of rocks were prized by Chinese scholars as vital sources of inspiration for painting, poetry and calligraphy. The unique formation of the natural limestone—bringing to mind a majestic cliff atop a mountain—inspired its name. Each shift of light or turn of the stone encourages contemplation. A custom-carved mount was designed simply to complement the stone's varied and complex dimension.



1740 W. Webster Ave., Chicago, IL 60614 • 773-235-1188 • [info@pagodared.com](mailto:info@pagodared.com)

PAGODARED.COM