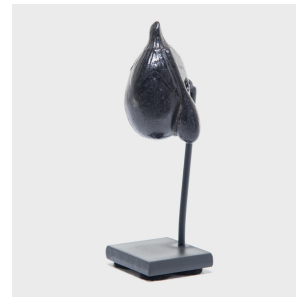

PAGODA RED



JAPANESE WOODEN SQUASH NETSUKES

\$288

c. 1900 • Japan • Wood • Collection #AA012

W: 1.5" D: 1.25" H: 4.0"

Traditional Japanese garments had no pockets, and so people carried their personal belongings in drawstring pouches secured with netsuke. Invented for practical purposes these netsuke figurines quickly became valuable art pieces crafted from ivory or, in this case, wood. This sculpture was carefully fashioned to look like a squash—an auspicious symbol of fertility. It comes with a custom stand that allows you to view this little masterpiece from every angle.



1740 W. Webster Ave., Chicago, IL 60614 • 773-235-1188 • info@pagodared.com

PAGODARED.COM