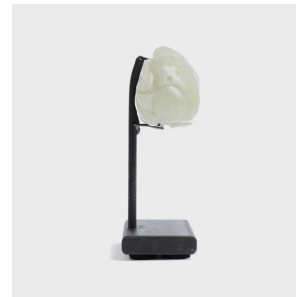
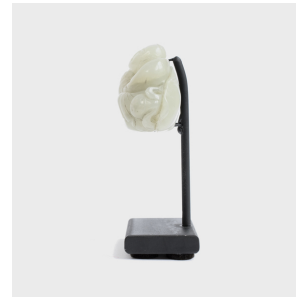


---

# PAGODA RED

---



## CARVED JADE CHARM OF BOY AND LOTUS

**\$1,280**

c. 1800 • Unknown, China • Jade • Collection #CMKH066

W: 2.25" D: 1.0" H: 3.0"

This finely crafted jade toggle is carved in the form of a child seated beside a lotus—a motif often used to symbolize a person's wish for a son. Toggles were a standard part of Chinese clothing for centuries. They were attached to the ends of a bag's drawstring, which men hung from their belts and used as storage.



1740 W. Webster Ave., Chicago, IL 60614 • 773-235-1188 • [info@pagodared.com](mailto:info@pagodared.com)

PAGODARED.COM