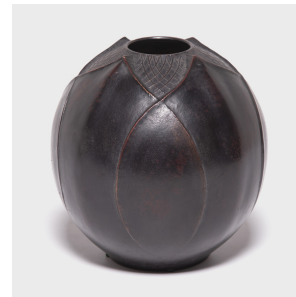
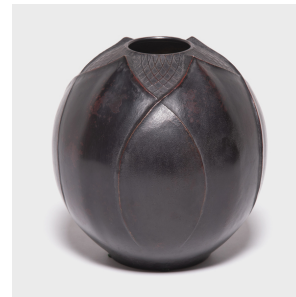
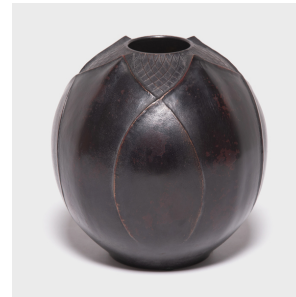

PAGODA RED



JAPANESE ZINC LOTUS BUD VASE

\$1,480

c. 1900 • Japan • Alloy • Collection #CCB021

H: 7.5" Dia: 6.5"

Traditional Japanese metalworkers are renowned for creating specialized alloys that elevated the art of refining, molding, and casting metals. An alloy of zinc and copper gives this metal vessel its rich dark color, cast in the shape of lotus flower bud, a symbol of purity and perfection. Shaped in slight relief against the matte surface, we love how the raised outlines of each petal bring out the vessel's warmth.



1740 W. Webster Ave., Chicago, IL 60614 • 773-235-1188 • info@pagodared.com

PAGODARED.COM