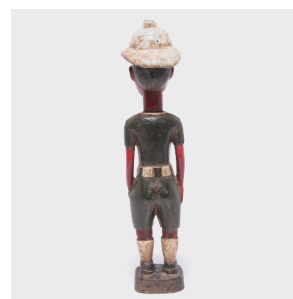
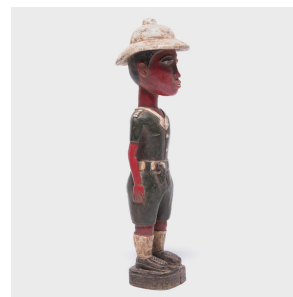

PAGODA RED



BAULE COLONIAL FIGURE

\$980

c. 1950 • West Africa • Paint, Wood • Collection #CAA1364

W: 4.75" D: 5.75" H: 20.5"

The hats, clothes, and exaggerated features mark this Baule figure as a colonial satire. At the height of European colonization, many African craftspersons made figures that called out the oppressive cultural impositions Europeans brought with them. The vibrant colors and expressive facial features combine with the figure's stature to resist the cultural constraints represented by Western attire.



1740 W. Webster Ave., Chicago, IL 60614 • 773-235-1188 • info@pagodared.com

PAGODARED.COM