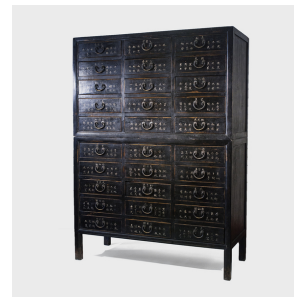


PAGODA RED



APOTHECARY CHEST

\$5,880

c. 1900 • Beijing, China • Northern Elmwood • Collection #CPC004

W: 45.5" D: 19.0" H: 63.0"

This unusually configured apothecary chest was originally used during the 19th century in a traditional Northern Chinese pharmacy to organize & store medicinal herbs. It was constructed with traditional mortise and tenon joinery and each of its 30 drawers is beautifully dovetailed and painted with Chinese calligraphy denoting the specific type of herbal medicine it once contained.



1740 W. Webster Ave., Chicago, IL 60614 • 773-235-1188 • info@pagodared.com

PAGODARED.COM