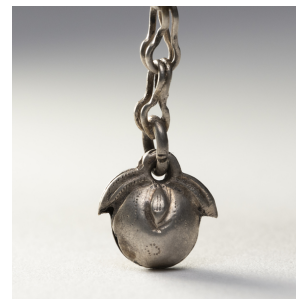

PAGODA RED



SCHOLARLY CHARM RING

\$88

c. 1900 • China • Silver, Alloy • Collection #LUBRING_QQ

W: 2.0" D: 0.75" H: 0.5"

Dated to the late 19th century, this silver charm ring was crafted by the Miao peoples of the Guizhou province and was believed to protect the wearer from bad luck and malevolent spirits. The ring is decorated in relief with a scene of two robed scholars strolling through a garden, surrounded by pine trees and foliage. A short chain hangs from the face of the ring, ending in a small repoussé charm of a ripe peach, a symbol of immortality.

Ring size is adjustable. All jewelry sales are final. No refunds or exchanges.



1740 W. Webster Ave., Chicago, IL 60614 • 773-235-1188 • info@pagodared.com

PAGODARED.COM