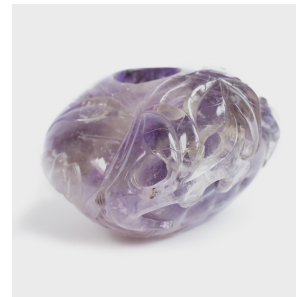
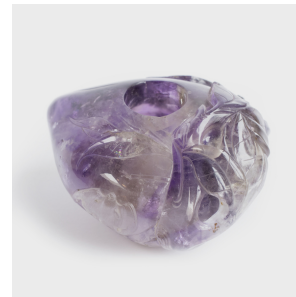
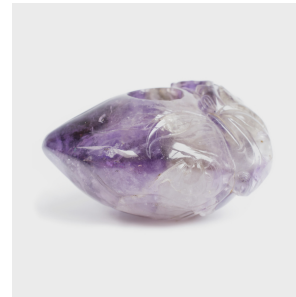


---

# PAGODA RED

---



## AMETHYST PEACH BRUSH WASHER

**\$1,880**

c. 1850 • China • Gems • Collection #CMKH026

W: 4.0" D: 3.5" H: 2.75"

A Qing-dynasty scholar would have used this finely carved amethyst brush washer to rinse the ink from his calligraphy brush. Crafted from a single block of amethyst, the washer is shaped into a ripe peach, with curling leaves carved in low relief. Among the leaves is a curious fruit bat - a symbol of happiness and good fortune. An emblem of longevity, the peach figures prominently in the Ming-dynasty novel "Journey to the West," wherein the Monkey King Sun Wukong eats from the heavenly peach garden to obtain immortality.



1740 W. Webster Ave., Chicago, IL 60614 • 773-235-1188 • [info@pagodared.com](mailto:info@pagodared.com)

PAGODARED.COM