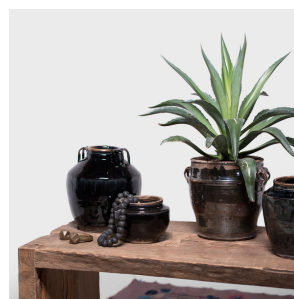
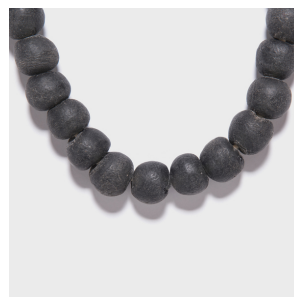
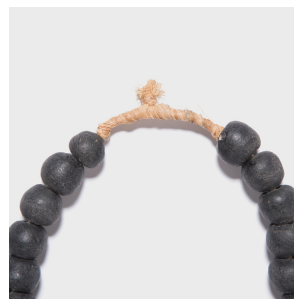


---

# PAGODA RED

---



## GLASS BEAD NECKLACE

**\$480**

c. 1950 • West Africa • Glass, Reed • Collection #CAA1000

W: 7.0" D: 0.75" H: 12.5"

This string of hand-formed glass beads makes for a simple yet elegant contemporary necklace. Each bead is rounded and tinted with dark pigment with a matte texture. Paired with another statement necklace or draped over a tabletop as a decorative display, this beaded necklace is a versatile addition to any jewelry collection.



1740 W. Webster Ave., Chicago, IL 60614 • 773-235-1188 • [info@pagodared.com](mailto:info@pagodared.com)

PAGODARED.COM